

## T-Angle Connector Clamps

Aluminum, Multi Part Assembly

### SPECIFICATION

#### Identification No.

No. 2: With 6 stainless steel socket cap screws DIN 912

Aluminum

Powder coated

Black, RAL 9005, textured finish **SW**

Plain finish, matte shot-blasted **BL**

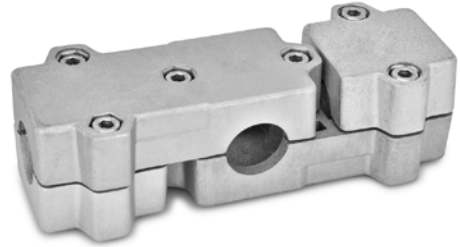
Socket cap screws DIN 912

Stainless steel AISI 304

Hex nuts DIN 985

Stainless steel AISI 304

Self-locking via polyamide ring



### INFORMATION

The clamping bores of T-angle connector clamps GN 194 are not machined and designed for construction tubes GN 990 (see page 1902) or DIN 2391, DIN 2395 and DIN 2462.

The versions with square bores are also suitable for use with **profile systems**.

At the screw locations **z**, the socket cap screws reduce the bore cross-section for clamping.

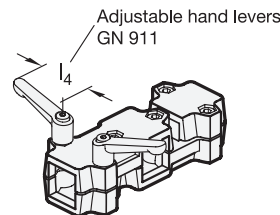
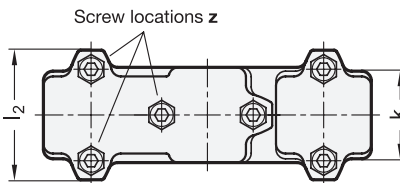
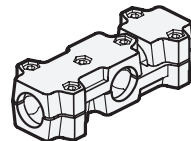
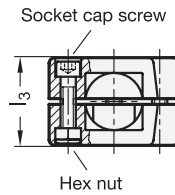
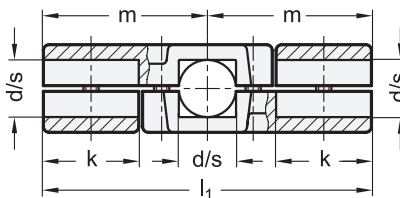
For clamping without tools, the socket cap screws can be replaced by the adjustable hand levers GN 911 (see page 1874) listed in the table as accessories.

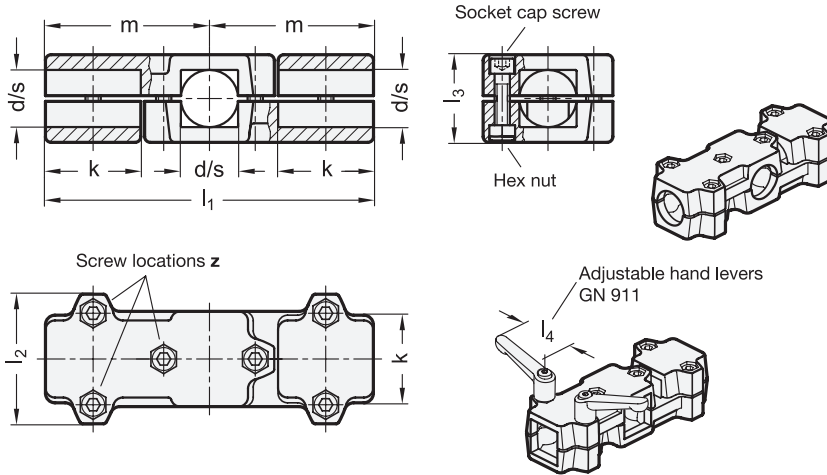
### ACCESSORY

- Adjustable Hand Levers GN 911 (see page 1874)

### TECHNICAL INFORMATION

- Stainless Steel Characteristics (see page A26)





\*Complete with

SW  
RAL9005

BL  
Plain finish

GN 195-B

Description	d Bore	k Clamping length	l <sub>1</sub>	l <sub>2</sub>	l <sub>3</sub>	m	z Screw locations	Accessory Recom. hand lever GN 911 for z l <sub>4</sub>	⚖
GN 195-B20-50-2-*	B 20	50	172	68	46	86	M8-35	63   78	600
GN 195-B25-50-2-*	B 25	50	172	68	46	86	M8-35	63   78	585
GN 195-B30-50-2-*	B 30	50	172	68	46	86	M8-35	63   78	545
GN 195-B30-60-2-*	B 30	60	203	79	59	101.5	M8-50	63   78	1157
GN 195-B32-60-2-*	B 32	60	203	79	59	101.5	M8-50	63   78	1155
GN 195-B35-60-2-*	B 35	60	203	79	59	101.5	M8-50	63   78	1131
GN 195-B40-60-2-*	B 40	60	203	79	59	101.5	M8-50	63   78	1059
GN 195-B40-76-2-*	B 40	76	254	98	70	127	M10-60	78   92	1580
GN 195-B42-76-2-*	B 42	76	254	98	70	127	M10-60	78   92	1586
GN 195-B45-76-2-*	B 45	76	254	98	70	127	M10-60	78   92	1550
GN 195-B48-76-2-*	B 48	76	254	98	70	127	M10-60	78   92	1510
GN 195-B50-76-2-*	B 50	76	254	98	70	127	M10-60	78   92	1470

GN 195-S

Description	s Square	k Clamping length	l <sub>1</sub>	l <sub>2</sub>	l <sub>3</sub>	m	z Screw locations	Accessory Recom. hand lever GN 911 for z l <sub>4</sub>	⚖
GN 195-V20-50-2-*	V 20	50	172	68	46	86	M8-35	63   78	580
GN 195-V25-50-2-*	V 25	50	172	68	46	86	M8-35	63   78	565
GN 195-V30-50-2-*	V 30	50	172	68	46	86	M8-35	63   78	530
GN 195-V30-60-2-*	V 30	60	203	79	59	101.5	M8-50	63   78	1145
GN 195-V35-60-2-*	V 35	60	203	79	59	101.5	M8-50	63   78	1071
GN 195-V40-60-2-*	V 40	60	203	79	59	101.5	M8-50	63   78	975
GN 195-V40-76-2-*	V 40	76	254	98	70	127	M10-60	78   92	1550
GN 195-V45-76-2-*	V 45	76	254	98	70	127	M10-60	78   92	1480
GN 195-V50-76-2-*	V 50	76	254	98	70	127	M10-60	78   92	1390

Weight BL

